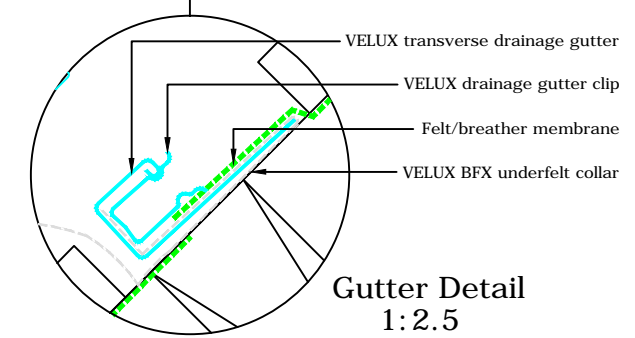
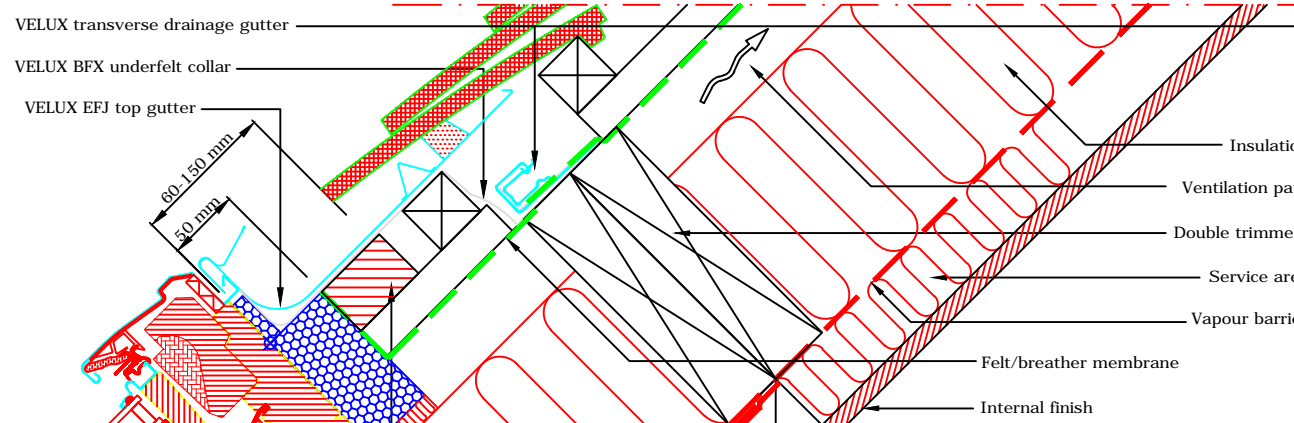
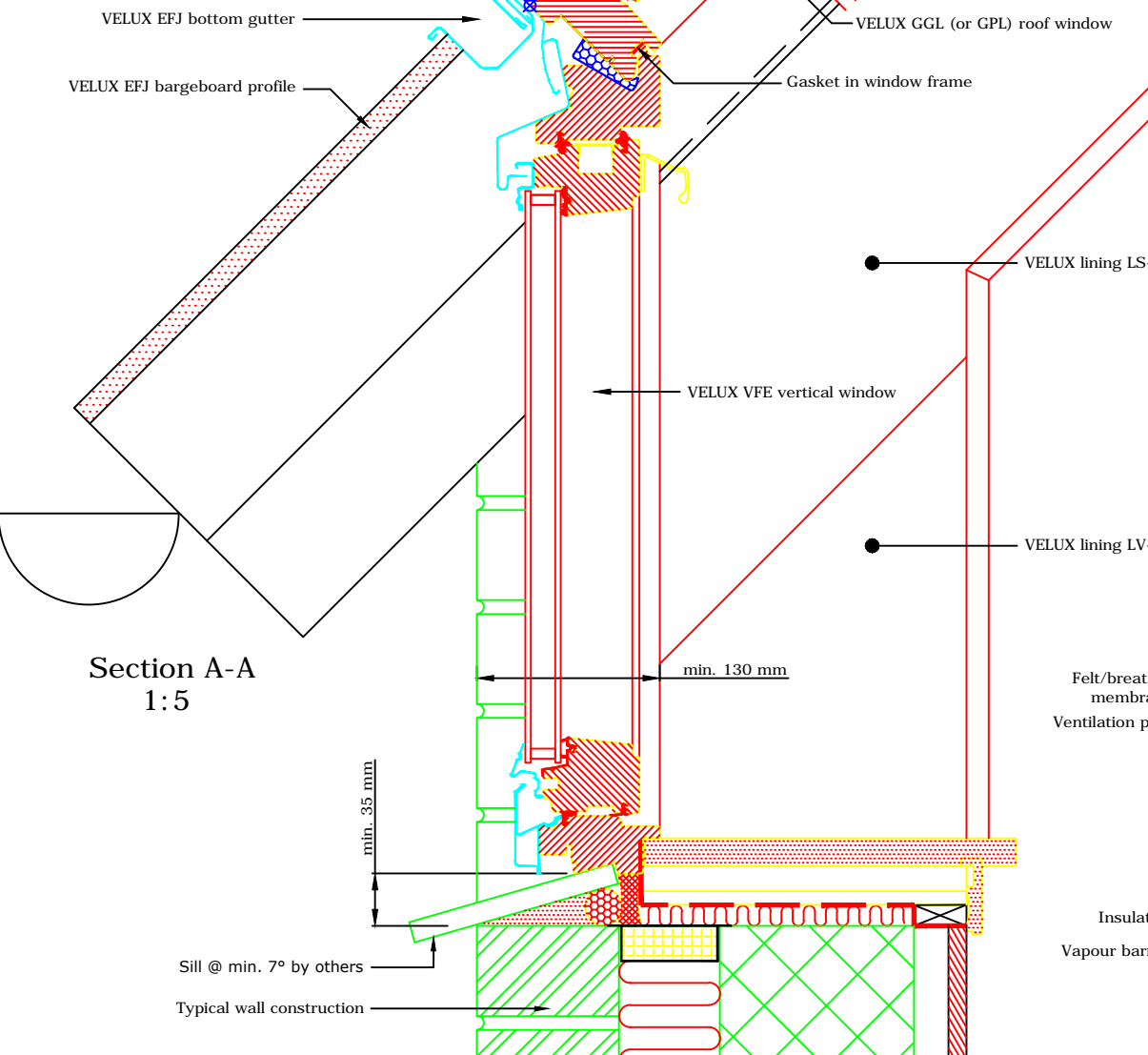


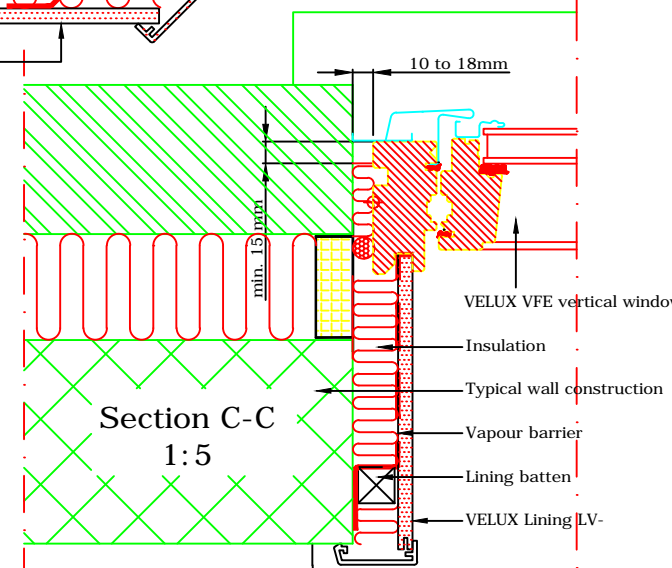
TYPICAL ELEVATION



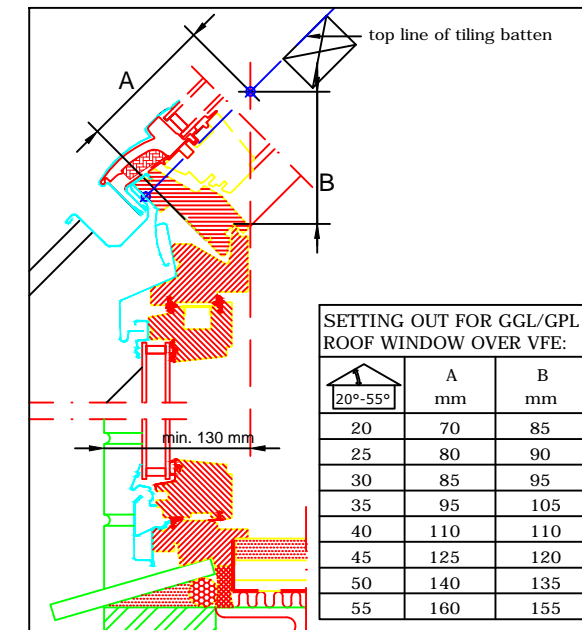
Gutter Detail
1:2.5



Section A-A
1:5

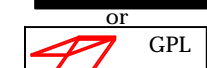


Section C-C
1:5

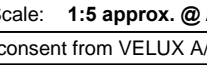
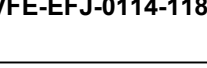
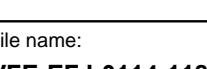
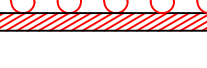
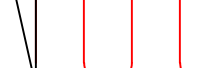
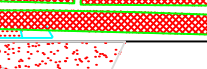
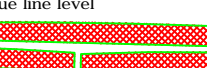
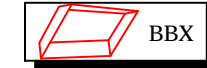


Section B-B
1:5

VELUX Products:



* 55°-75° with special springs



SETTING OUT FOR GGL/GPL ROOF WINDOW OVER VFE:

20°-55°	A mm	B mm
20	70	85
25	80	90
30	85	95
35	95	105
40	110	110
45	125	120
50	140	135
55	160	155

VELUX
 VELUX Company Ltd
 Woodside Way
 Glenrothes, Fife KY7 4ND
 tel: +44 (0) 1592 778 225

VELUX vertical window
VFE combi installation into plain tile
 EFJ flashing kit - recessed install - 18mm frame gap
All dimensions are in millimetres where shown

NOTE! When installing VELUX roof windows, flashings and accessories, please ensure compliance with building regulations and British/European standards where necessary. This detail represents the principles of a typical installation only and the design and specification of the final detail is the responsibility of others.

Latest revision:
 Note re: restriction on use of EBY trimmer added

Date: **June 2014**
 Rev no: A
 Rev date: Nov 2014
 Drawn: **PJH**

File name:
VFE-EFJ-0114-1183
 Scale: **1:5 approx. @ A3**